

STRUCTURAL ENGINEERING CONSULTANTS


# KITALL

## Company Brochure

We Are The Solution For All Your Engineering Requirements



2024



# A Powerhouse of Experience

Our senior team has a combined experience of over **100 years**, with over **£2 Billion** of projects delivered



# Contents

## Who We Are

We are a team of experienced professionals dedicated to providing innovative and sustainable design solutions

**4**

## Our Key Services

Structural Engineering,  
Civil Engineering,  
Temporary Works,  
LiDAR & Building Surveys

**5**

## Sustainability

We are committed to integrating sustainable practices into every project

**6**

## Projects & Clients

We have a proven track record of delivering successful projects across various sectors

**7**

## Our Team

Our talented and passionate team brings a wealth of expertise and a collaborative approach to every project.

**12**

## Contact Us

Get in touch to discuss your project needs and discover how our expertise can benefit you.

**14**

# Engineering A Better Future



## Who We Are

At Kitall, we are more than just structural engineers; we are dedicated to shaping a better future through innovative and sustainable design. With years of experience and a team of passionate engineers, we provide expert consulting services in civil and structural engineering, along with specialised expertise in temporary works.

Our approach is rooted in a deep understanding of our clients' needs. We believe in fostering strong partnerships and open communication to ensure that every project, from concept to completion, is a success. Whether you're envisioning a grand architectural landmark or a complex infrastructure project, Kitall has the knowledge and dedication to bring your vision to life.

## Our Mission

Our mission is rooted in the belief that engineering is not just about structures, but about shaping a better future. We embark on every project with a clear purpose: to place the project's needs at the forefront, transcending personal egos and focusing solely on what best serves the endeavor at hand. Our commitment is to engineer solutions that are not only the best in class but also innovative and sustainable, reflecting our dedication to excellence and forward-thinking.

## Our Core Values

### Project-First Approach

Every project is our top priority. We put aside egos to focus solely on what's best for the project, embodying a spirit of dedication and selflessness.

### Innovation & Excellence

Our commitment is to deliver unparalleled engineering solutions. Merging expertise with innovation, we excel in turning complex challenges into outstanding results.

### Collaborative Success

We believe in the power of teamwork 'if you want to go far, go together.' We thrive on teamwork, valuing the power of shared knowledge and united efforts to amplify our impact on every project.

### Integrity in Action

Guided by the principle 'doing the right thing is never wrong,' we maintain unwavering integrity, ensuring our actions earn trust and respect, even in the face of challenges.

# Our Key Services

Our diverse areas of expertise are designed to fit the changing needs of your project

## Structural Engineering

Our expert team ensures your structures are not only visually impressive but also robust, efficient, and sustainable, transforming architectural visions into lasting realities.

## LIDAR/Building Surveys

We now offer cutting-edge 3D Digital Lidar surveys, providing everything from raw point cloud data to full 3D Revit models, ideal for a variety of projects including urban, greenfield, refurbishment, structural, bridge, MEP, drainage, and building fabric surveys.

## Cladding

In response to the UK's cladding crisis post-Grenfell, our cladding service provides expert structural assessments, safety recommendations, and tailored solutions for removing and replacing unsafe cladding. Our experienced engineers ensure compliance with safety regulations, helping property owners protect their buildings and ensure the well-being of residents.

## Scaffold Design

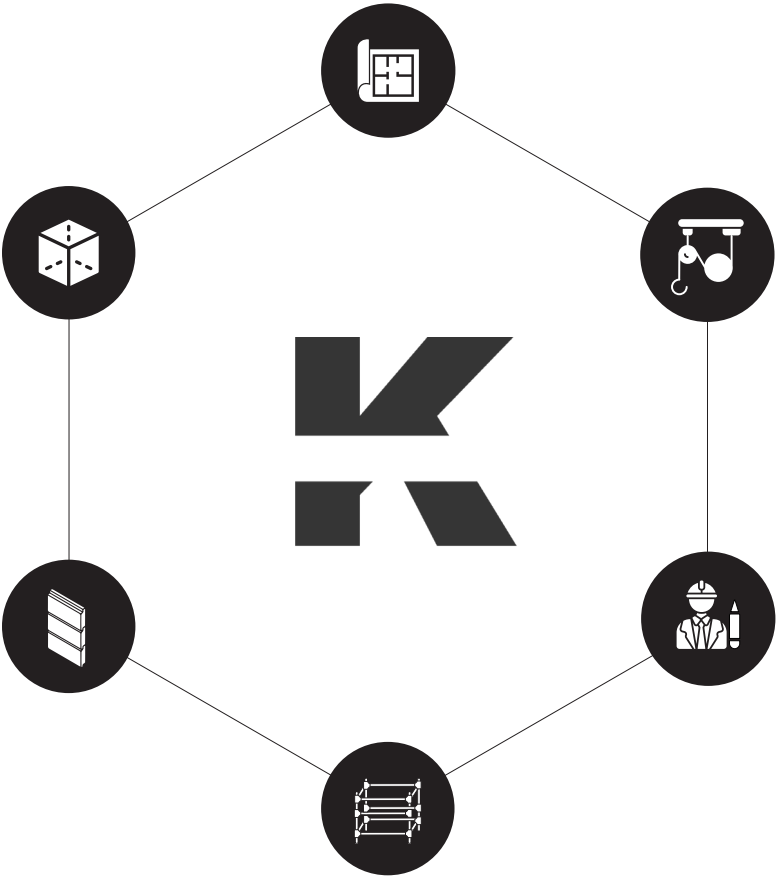
Maximise efficiency with our Scaffold Design Services: Tailored for rapid, cost-effective execution, we focus on practical, buildable solutions that optimise labor and materials, ensuring your project is delivered on time, within budget, and with the resources you have. Check out our scaffold design

## Temporary Works

Specialising in safe, efficient, and innovative solutions, we ensure your temporary structures support and enhance your project, seamlessly integrating with your construction goals.

## Civil Engineering

Bridging functionality with innovation, our skilled civil engineers design and develop infrastructure that's efficient, sustainable, and integral to modern living, turning complex challenges into practical, long-lasting solutions.



# Building a Sustainable Future:

INNOVATIVE SOLUTIONS FOR NET ZERO-CARBON CONSTRUCTION



## Our Commitment

At Kitall, we're dedicated to helping you achieve your sustainability goals on your Project. Our experienced team of engineers provides innovative solutions that address the challenges of embodied carbon, resource efficiency, and ecological design. We are also proud signatories of both the Civil and Structural Declare initiatives.



## How We Do It:

### Tailored Solutions:

We work closely with you to understand your specific needs and develop practical, effective strategies that align with your project goals.

### Deep Expertise:

Our team brings a wealth of knowledge in the Environment to every project, ensuring sustainable outcomes.

### Holistic Approach:

We consider the entire lifecycle of your project, from design to construction and operation, to minimise environmental impact.

### Innovative Thinking:

We stay ahead of the curve by embracing emerging technologies and sustainable practices.

## Key Sustainability Principles:

### Resource Efficiency:

Reducing waste and maximising material utilisation.

### Ecological Design:

Protecting natural ecosystems and minimising negative environmental impacts.

### Energy Efficiency:

Prioritising renewable energy and energy-saving measures.

### Water Conservation:

Implementing efficient water use practices.

### Healthy Indoor Environments:

Creating spaces that promote well-being and productivity.



## FORTNUM & MASON ROYAL EXCHANGE BUILDING, LONDON

**LOCATION:** 4-7 Royal Exchange, London EC3V 3LR

**MARKET:** Hospitality

**PROJECT SIZE:** £250,000

**COMPLETION:** 2021

**CLIENT:** Fortnum + Mason

**ARCHITECT:** Stiff + Trevillion

The Royal Exchange Building now features a new freestanding bar with intricate geometry. This structure supports concealed HVAC equipment for the bar and its surroundings.

Key works included steelwork design for HVAC support and complicated steel connections.





## HAWKSMOOR WOOD WHARF CANARY WHARF, LONDON

**LOCATION:** 1 Water St, London E14 5GX  
**MARKET:** Hospitality  
**PROJECT SIZE:** £35m  
**COMPLETION:** 2023  
**CLIENT:** Canary Wharf Contractors  
**ARCHITECT:** Howells

Hawksmoor, embarked on a unique project to create its first floating restaurant in Canary Wharf.

Floating site presented unique structural and logistical challenges.

Detailed structural analysis required with comprehensive calculations to understand the buoyancy with the aim to balance and stabilise the floating restaurant.





## THE PENINSULAR HOTEL BELGRAVIA

The Peninsula Hotel embarked on two significant restaurant projects: one on the ground-floor and a grand restaurant on the 8th floor. The main building's construction posed unique challenges due to its post-tension slabs and extensive HVAC installations passing across the ceilings.

Customised structural supports created with non-invasive support systems to maintain the integrity of the post-tensioned existing slab.

LOCATION:	1 Grosvenor Pl, SW1X 7HJ
MARKET:	Hospitality
PROJECT SIZE:	£1bn
COMPLETION:	2023
CLIENT:	The Hong Kong and Shanghai Hotels



## THE RITZ LONDON

A Grade II listed building, required a unique scaffolding solution for its renovation, avoiding lateral ties to preserve the façade. Innovative design and planning included cantilevered beams and collaborative workshops, ensuring safe and efficient project completion. This project underscores the importance of heritage preservation and excellence in construction for historical buildings.

LOCATION:	150 Piccadilly, London W1J 9BR
MARKET:	Hospitality
PROJECT SIZE:	£300m
COMPLETION:	2027
CLIENT:	Sir Robert McAlpine
ARCHITECT:	EPR Architects



## FOOT LOCKER MULTIPLE UK LOCATIONS

Kitall have collaborated with Foot Locker for years on various shopping center projects, from new builds to renovations. This included developing standardized specifications for shop displays and TV walls, enabling consistent fittings across regional stores. Kitall also contributed to their flagship stores, notably the Marble Arch location in London. This project involved adding a basement mezzanine, supported by existing columns to minimize load on underground infrastructure, along with new staircases, lifts, and dumbwaiters.

LOCATION:	Multiple Stores Nationwide UK
MARKET:	Retail
CLIENT:	Foot Locker



## KXU BOUTIQUE WELLNESS HUB LONDON

This new high-end gymnasium was a complex fit out, with primary and secondary support for aerial yoga, cryotherapy chamber, plus a regular gym.

We had a complicated coordinated design for the aerial yoga, trying to coordinate the acoustic fittings with the anchor points, under another demise. We also had numerous builders works to coordinate with the existing structural constraints. Works also included a new opening for staircase and DDA lift.

LOCATION:	241 Pavilion Rd, London SW1X 0BP
MARKET:	Leisure
CLIENT:	KXU



## SHERWOOD PICCADILLY LIGHTS ONE SHERWOOD STREET, LONDON

**LOCATION:** One Sherwood Street, London, W1D 7ET

**MARKET:** Mixed-Use Office with Retail

**PROJECT SIZE:** £250M

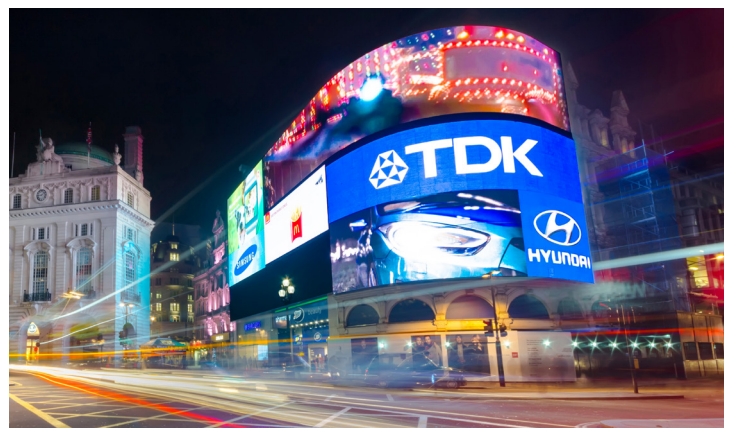
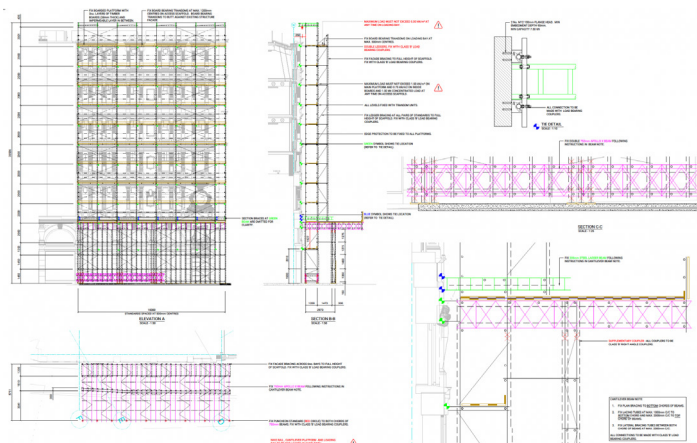
**COMPLETION:** 2023

**CLIENT:** Waters

**ARCHITECT:** Fletcher Priest Architects

A commercial composite steel frame development to revamp the Piccadilly Lights complex into offices, retail spaces, and residential apartments by Landsec.

The stepped-back roof design required advanced 3D modelling and innovative temporary works design.



# Some Of Our Clients

Our diverse areas of expertise are designed to fit the  
changing needs of your project



 Tap Logo to View

# Meet Our Leadership Team

## THE POWERHOUSE BEHIND OUR SUCCESS:

Our team has a combined experience of over 100 years, with over £2 Billion of projects delivered. They're not just at the forefront of our industry; they're redefining it.



**in Andrew Kitley**  
Managing Director & Co-Founder

Andrew is a construction industry leader and serial entrepreneur with over 20 years of experience. He founded a leading temporary works consultancy with offices in London and Dubai, and later launched Kitall in 2018 to address challenges in the UK construction sector. He is passionate about streamlining project management and promoting collaboration.

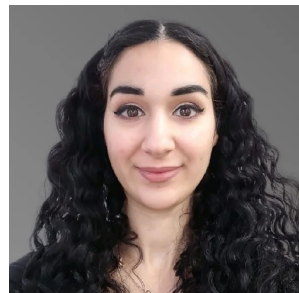
**EDUCATION**  
Southbank University, London  
London Business School



**in Kristina Coxall**  
Director & Co-Founder

Kristina is a global branding and communications leader known for turning around high-stakes campaigns and navigating complex mergers and acquisitions. With agency experience at Razorfish and BBH, she's worked with major brands like BT, HSBC, O2, and Audi. Kristina's sharp insight helps businesses overcome challenges and achieve success.

**EDUCATION**  
BA Hons, Marketing and Advertising



**in Kalliopi Florides**  
Director

Kalli is an experienced engineer with a decade of delivering major projects (valued between £120M and £1Bn) worldwide. She specializes in diverse construction like retail malls, residential towers, and office buildings, and has contributed to projects for Google and Walmart. At Kitall, she uses her expertise to drive business development and ensure successful project execution.

**EDUCATION**  
Imperial College London  
MEng (Hons) Civil & Environmental Engineering, CEng MICE



**in Duncan Leather**  
Director

Duncan is a Chartered Civil and Structural Engineer with over 35 years of experience. He specializes in concrete, steel, and timber design, and earthquake analysis. He has contributed to notable projects like the Japanese Telescope in Hawaii and Stratford Market Depot. Duncan founded JDL Consultants 24 years ago and also serves as an Expert Witness.

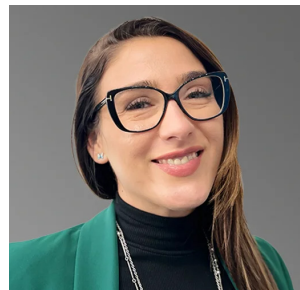
**EDUCATION**  
BSc Building Engineering, Bath University



**in Radosław Kamiński**  
Director

Radosław is a highly experienced Structural Engineer with nearly 20 years of UK experience. He brings a client-focused approach and meticulous attention to detail to a diverse range of projects, from residential alterations to large data centers. Radosław is a member of the Institution of Civil Engineers and holds a Bachelor of Engineering.

**EDUCATION**  
Masters Structural Engineering  
The University of Salford



**in Silvia Vieru**  
Director

Silvia is a leading temporary works expert, renowned for her innovative and cost-effective solutions. She has reshaped industry norms by combining commercial insight with advanced value engineering, setting new standards for technical excellence. A respected thought leader, Silvia inspires teams and drives innovation across temporary works, structural, and civil engineering.

**EDUCATION**  
Masters of Civil Engineering  
Engineering Gheorghe Asachi  
Technical University of Iași



**in Jonathan Leylands**  
Director

Jonathan, Director of Kitall's Manchester office, is a leader in scaffolding, temporary works, and structural engineering. With a background as Head of Engineering and Innovation, he has led large teams and managed major projects worth up to 20£m. A pioneer in 5D design processes, Jonathan drives technological advancement in the industry and guides Kitall's northern expansion.

**EDUCATION**  
BEng Civil Engineering  
University of Nottingham



Tap to View Profile

# Let's Work Together



## KITALL

### Your Trusted Engineering Partner

At Kitall, we believe in building strong and lasting relationships with our clients. We go beyond simply providing engineering solutions; we become an integral part of your project team, working collaboratively to achieve your vision. Here's why you should choose Kitall as your trusted engineering partner:

#### **Client-Centric Approach:**

We listen carefully to your needs and aspirations, ensuring that our solutions align perfectly with your project goals.

#### **Collaborative Spirit:**

We foster open communication and teamwork, working closely with architects, contractors, and other stakeholders to ensure seamless project delivery.

#### **Commitment to Quality and Safety:**

We adhere to the highest industry standards, ensuring that our designs are safe, durable, and built to last.

#### **Experienced and Qualified Team:**

Our team comprises highly skilled and experienced engineers with a passion for innovation and a deep understanding of structural behavior.

#### **Sustainable Practices:**

We are committed to environmentally responsible engineering, minimizing our impact on the planet while creating structures that are both beautiful and functional.

### Accreditations



# “ **Let's Build Together** ”

We understand that the path to extraordinary achievements is paved with collaboration.  
'If you want to go far, go together '





# Contact Us

**WORKING HOURS:**

Monday – Friday 08:00 – 17:00

**EMAIL:**

[design@kitall.co.uk](mailto:design@kitall.co.uk)

**WEBSITE:**

[www.kitall.co.uk](http://www.kitall.co.uk) | [www.kitsd.co.uk](http://www.kitsd.co.uk)



## LONDON OFFICE

**LOCATION:**

1st Floor, 200 Tower Bridge Road, London,  
SE1 2UN

**PHONE:**

020 3005 1572

## MANCHESTER OFFICE

**LOCATION:**

Beehive Lofts, Ancoats, Manchester,  
M4 6JG

**PHONE:**

0161 537 9710

## BRISTOL OFFICE

**LOCATION:**

27A Osprey Court, Hawkfield Way, Bristol,  
BS14 0BB

**PHONE:**

01275 372 154



# KITALL

STRUCTURAL ENGINEERING CONSULTANTS

[www.kitall.co.uk](http://www.kitall.co.uk)